



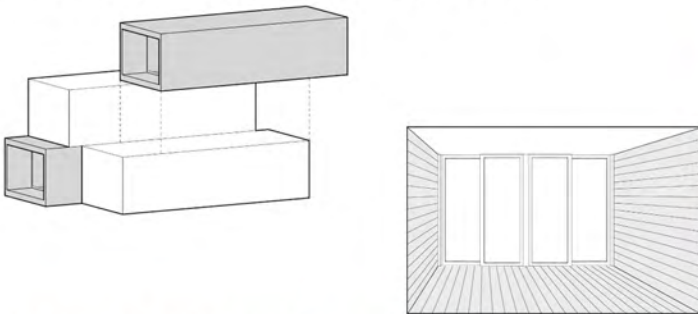
Urban Prefab:

As the trend in the US leads to bigger and better, the Urban Prefab, is a study in poetry and efficiency. Designed from the inside out, each element of program uses a finely tailored amount of space, and by grouping these elements strategically, each box forms a unique length. These varied lengths create overhanging cantilevers and roof decks, which break up the scale of the house and begin to create a dialog between the public and private realm within a typical urban lot. The Urban Prefab represents an elegant and spacious home that is challenging the "monster house" phenomenon head on.

Affordable Modernism?

The modular 4-box layout allows the whole house to be completed on-site within 8 weeks, greatly reducing both the time and costs associated with typical high-end custom architecture. The 4-bedroom, 3-bath house has 2200 sf above ground, a 700 sf finished basement, with a 2-car tuck under garage. Costs were about \$275,000 for the modular work, and \$75,000 for all design, site construction and tie-up costs (the owner served as his own GC), which is only \$120/sf!

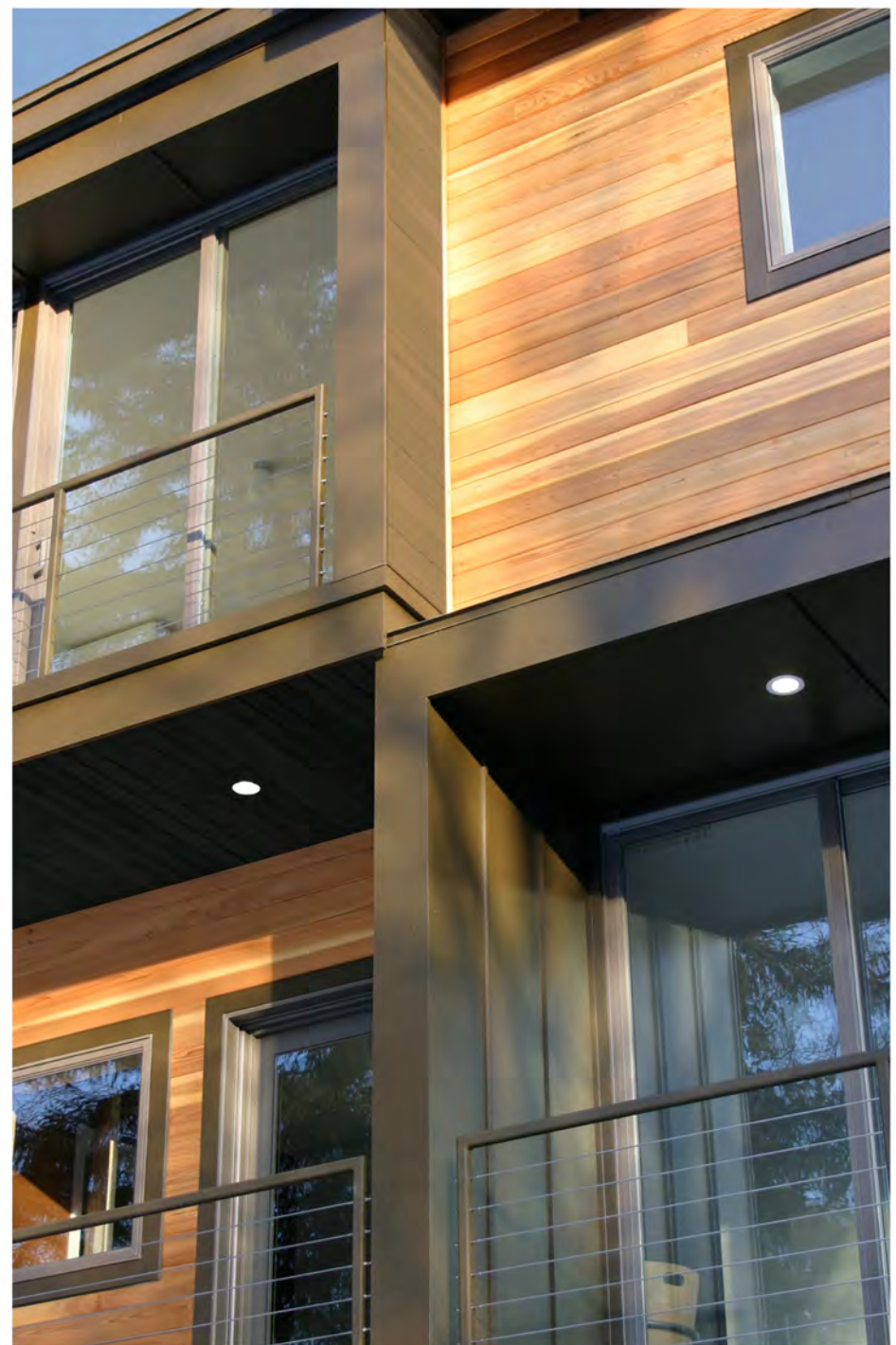
House is a celebration of modular construction.

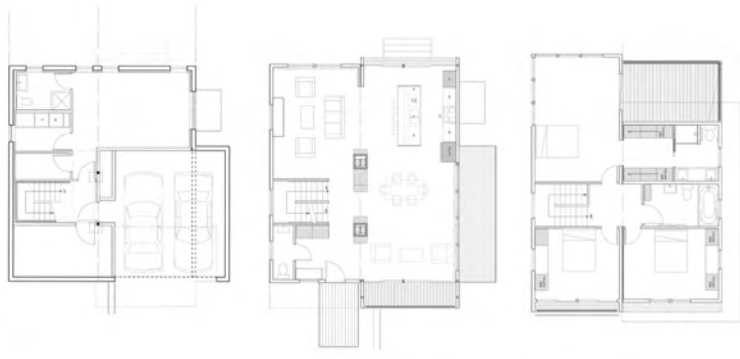


Standard 8' patio doors flush with ceiling plane maximize space and budget.



All photographs taken by the architect unless otherwise noted.

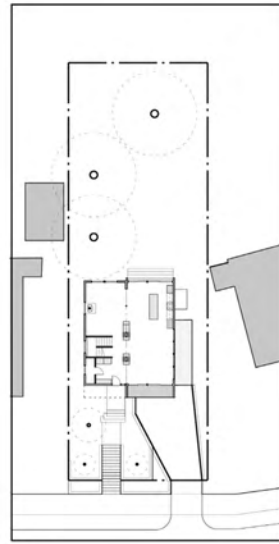




basement

1st floor

2nd floor



site



Photo by Seth Hannula



Photo by Seth Hannula



Photo by Seth Hannula