

# Klocker House

St.. Cloud, MN



The house is inspired by the ubiquitous pole barns of rural America. Opposing sides are painted black or silver to emphasize the planar aspect of the building. A sawtooth roof further segments the building and allows for high clerestory windows to efficiently light the entire house. The abstracted red barn door, pulled away from the façade to let light in from the sides, identifies the entry.



The house made use of SIPs (Structural Insulated Panels of OSB and foam) that allowed it to be completely erected and enclosed in only three days. A single steel beam supported by one exposed cloverleaf column carries the weight of the roof. The roof panels are 10" thick SIPs that clear span up to 14' and create an extremely tight, well-insulated shell. Floors are exposed concrete with in-floor hydronic heat. Remote-controlled operators with rain sensors allow natural ventilation through the strips of high Marvin awning windows. Weather protection over the sliding doors is handled with custom galvanized steel awnings.





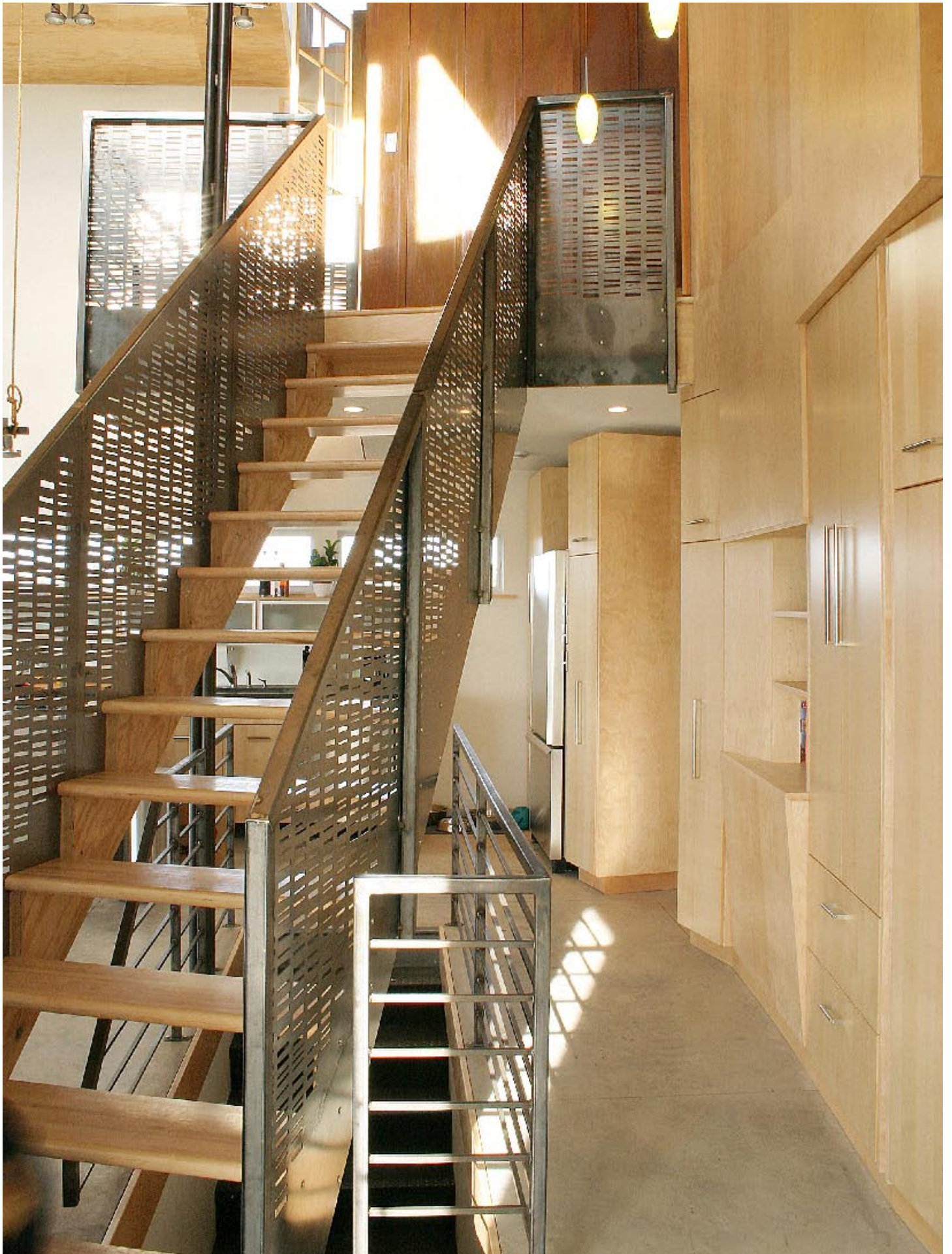


The interior is a mélange of urban loft and barn loft. Looking like stacked hay bales, a two-story wall of birch wall panels and IKEA cabinets separates the private and public spaces. A “farm relic” finished in oxidized steel paint provides enclosure for the master bath. The kitchen is IKEA with a customized stainless wrapped cart to form the island. A faceted plywood loft is hung from the walls and ceiling to create an office and provide a more intimate space for the TV/fireplace area. Both the firebox and the TV (with its “box”) sit upon a storage bench with sliding steel doors. The stair rail was laser cut using a custom pattern by graphic designer friend Jon Baugh and fabricated by Alchemy.





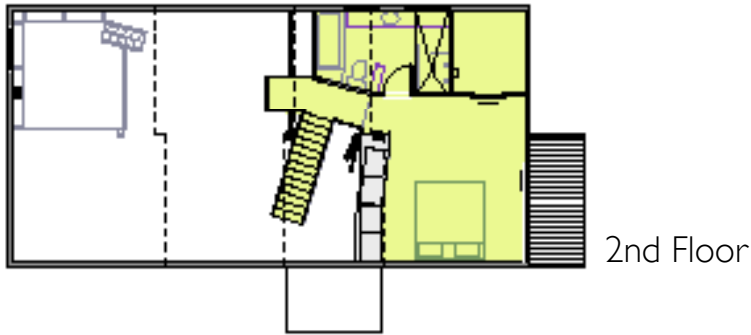
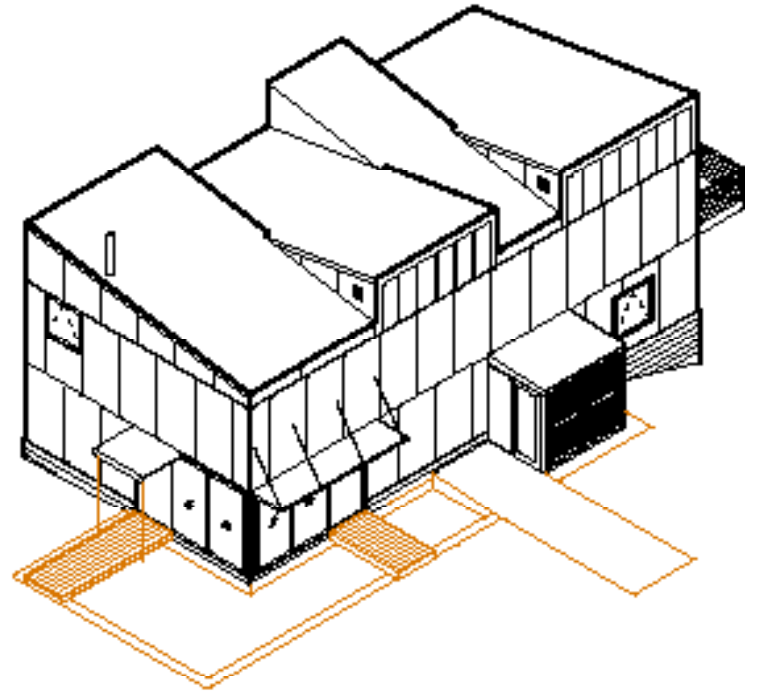




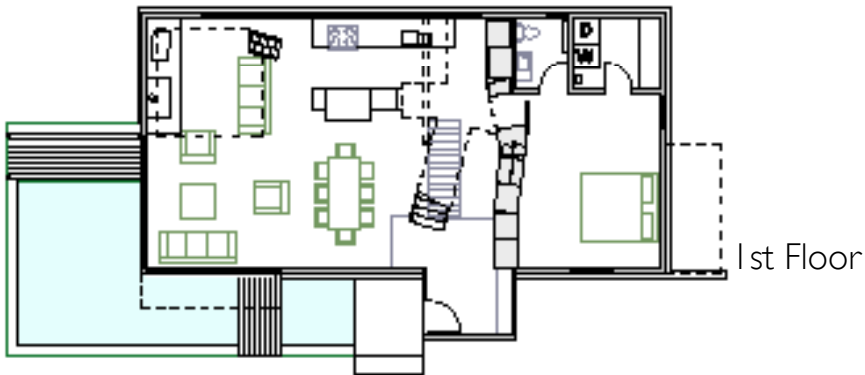




# Drawings



2nd Floor



1st Floor



Basement