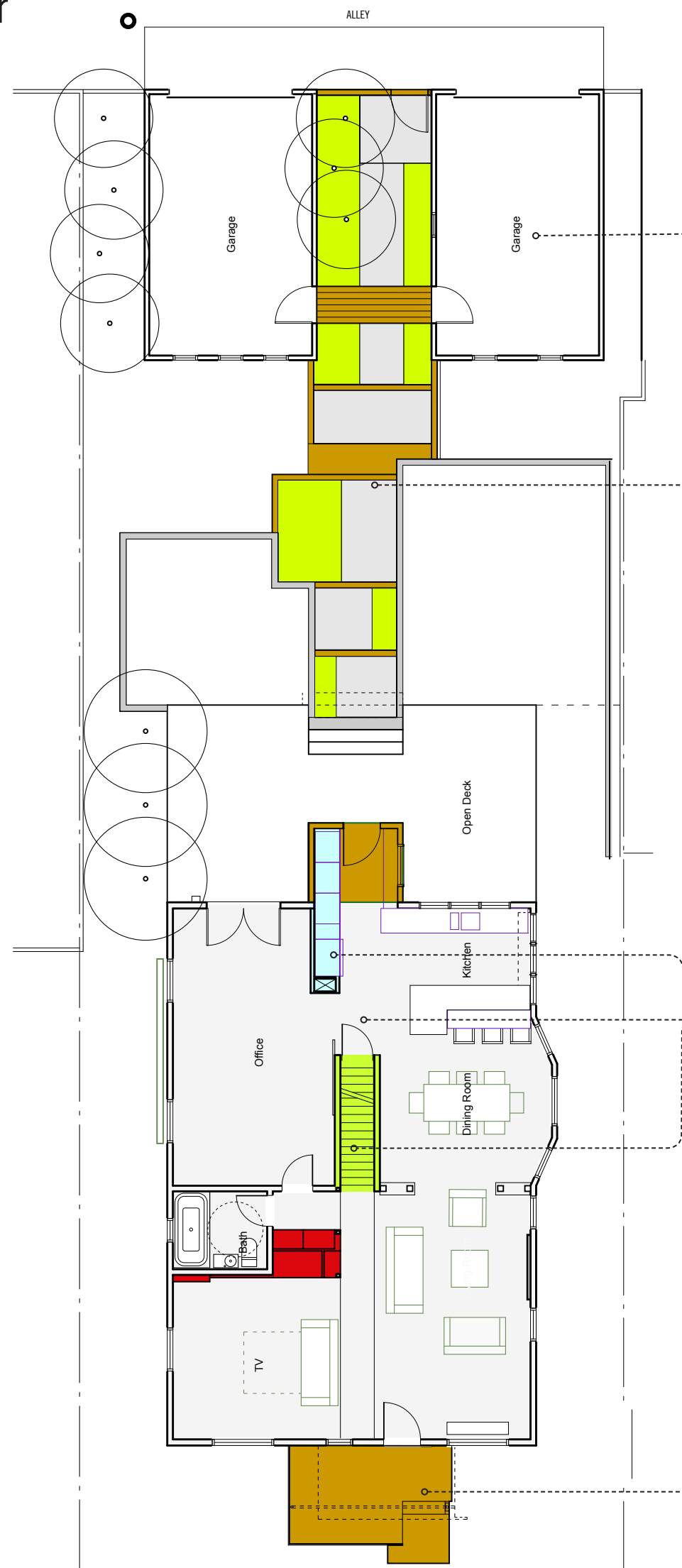


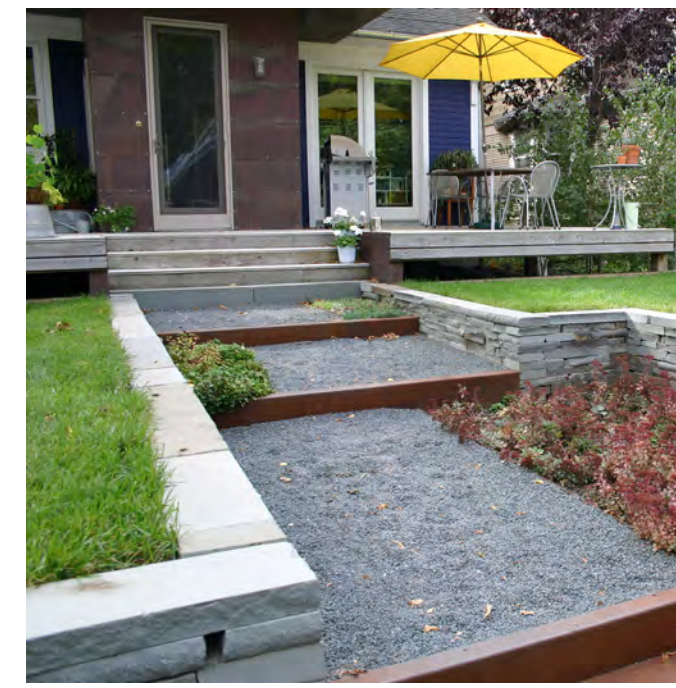
Second floor sky lit core with interior windows and translucent walls

Second Floor

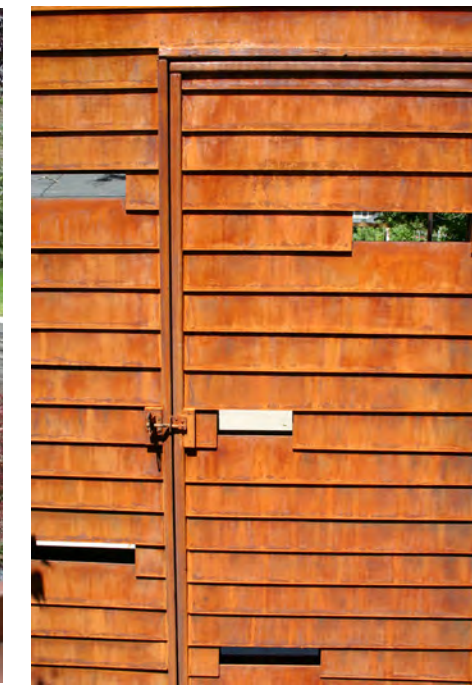
First Floor



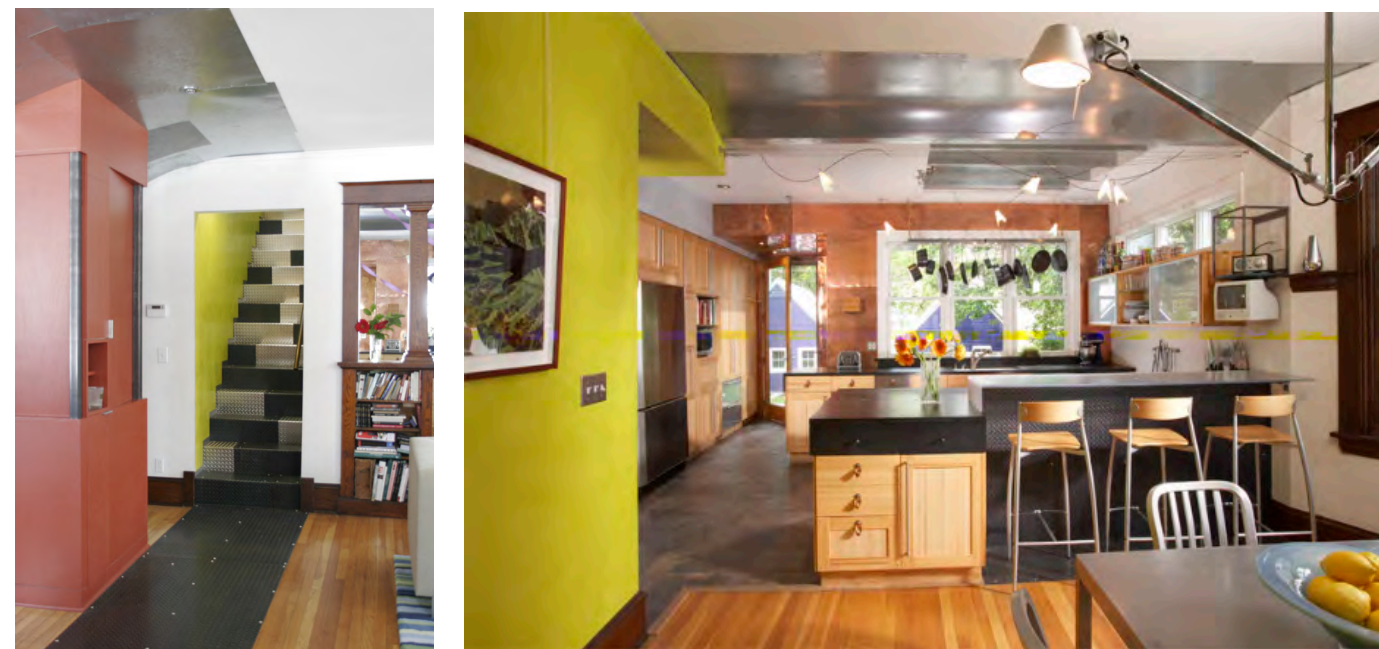
Paired single-car garages



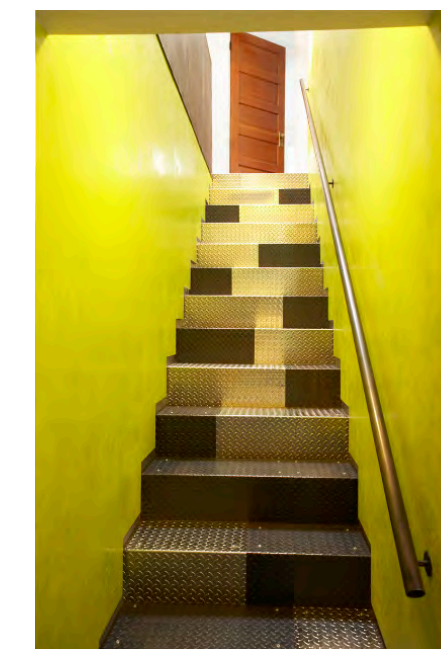
Ipe decking, copper siding elements



Cor-ten look alley wall



Pathway elements create axial organizing arrangement



Green stair core with steel seam and waterfall treads



Wood/mesh storage cabinet / closet



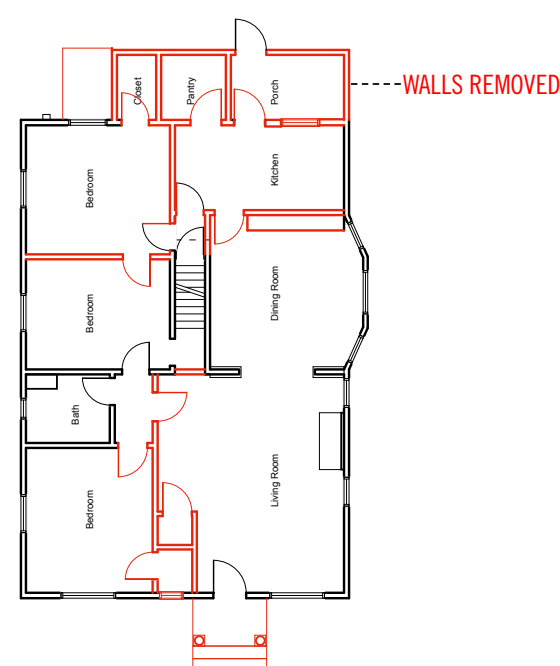
Galvanized steel and ipe wood entry deck



Polygal greenhouse plastic deck roof

After

Before



# Bungalow (Renovation)

St. Paul, Minnesota

**Strategies**

The house's "shell" is respectful of its 1911 origins while "objects" are inserted as contemporary additions  
Interior "pathway elements" create an axial organizing arrangement

**Project Goals**

- Flexible floor plan for family of 4 with 2 grade school children
- Phase renovations over a period of 7 years to fit with the owners' budget; total cost approx \$160K
- Create a working kitchen for daily cooking and frequent entertaining
- Create an urban garden retreat
- Energy efficiency

**Technical**

- Spray-in Icynene foam insulation
- Energy efficient Andersen windows, doors and updated storm doors including self-modulating sky lights
- In-floor hydronic heat combined with flat-panel radiators controlled by automatic thermostat
- Natural ventilation core
- Salvaged + typically industrial objects and materials used including doors, hardware, parachute, metals and lumber
- IKEA kitchen, customized, with sanded glass island and FireSlate counter tops
- Polygal greenhouse plastic, random-orbit sanded
- Tech lighting low-voltage fixtures
- Galvanized and cold-rolled perforated steel railings

